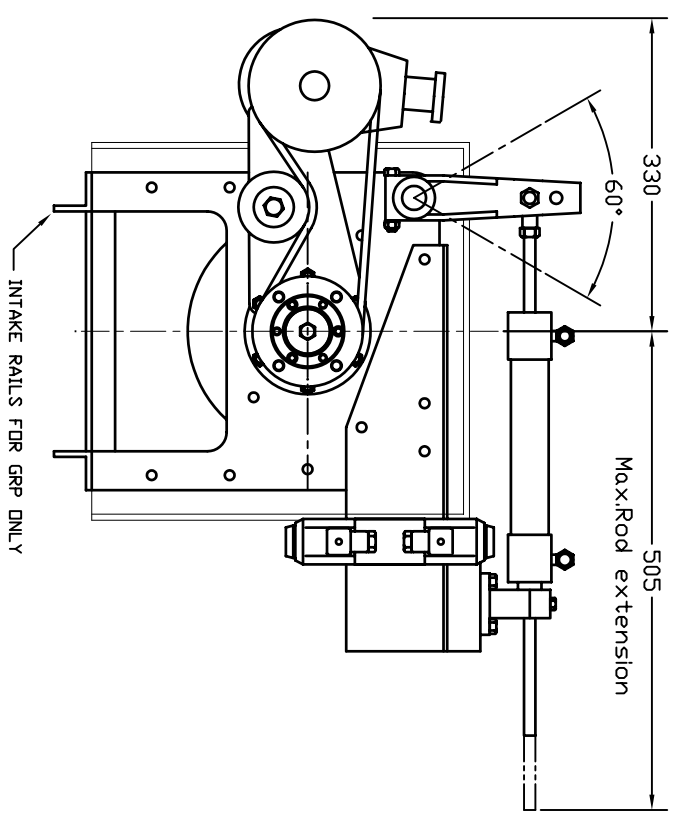
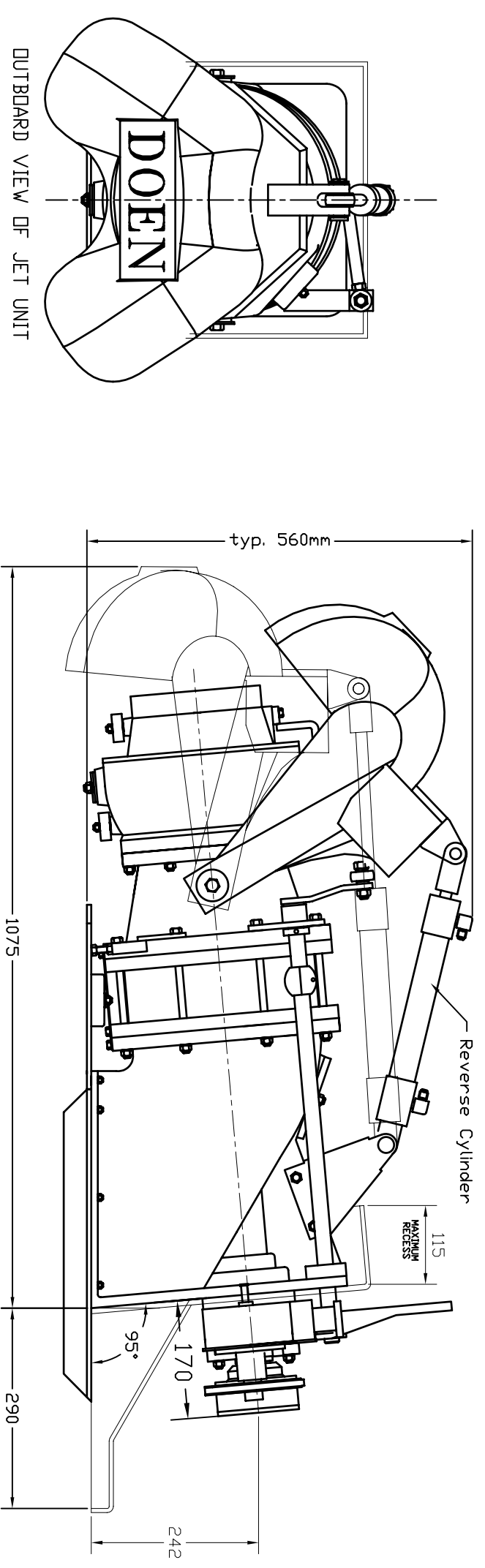
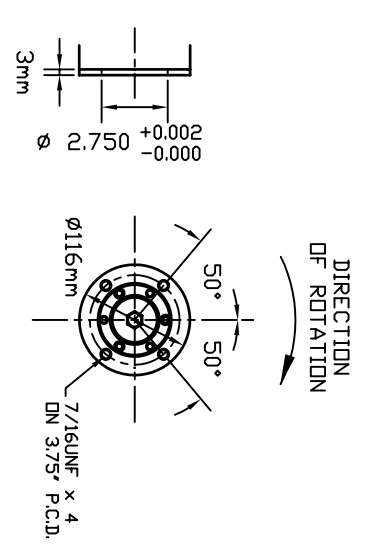
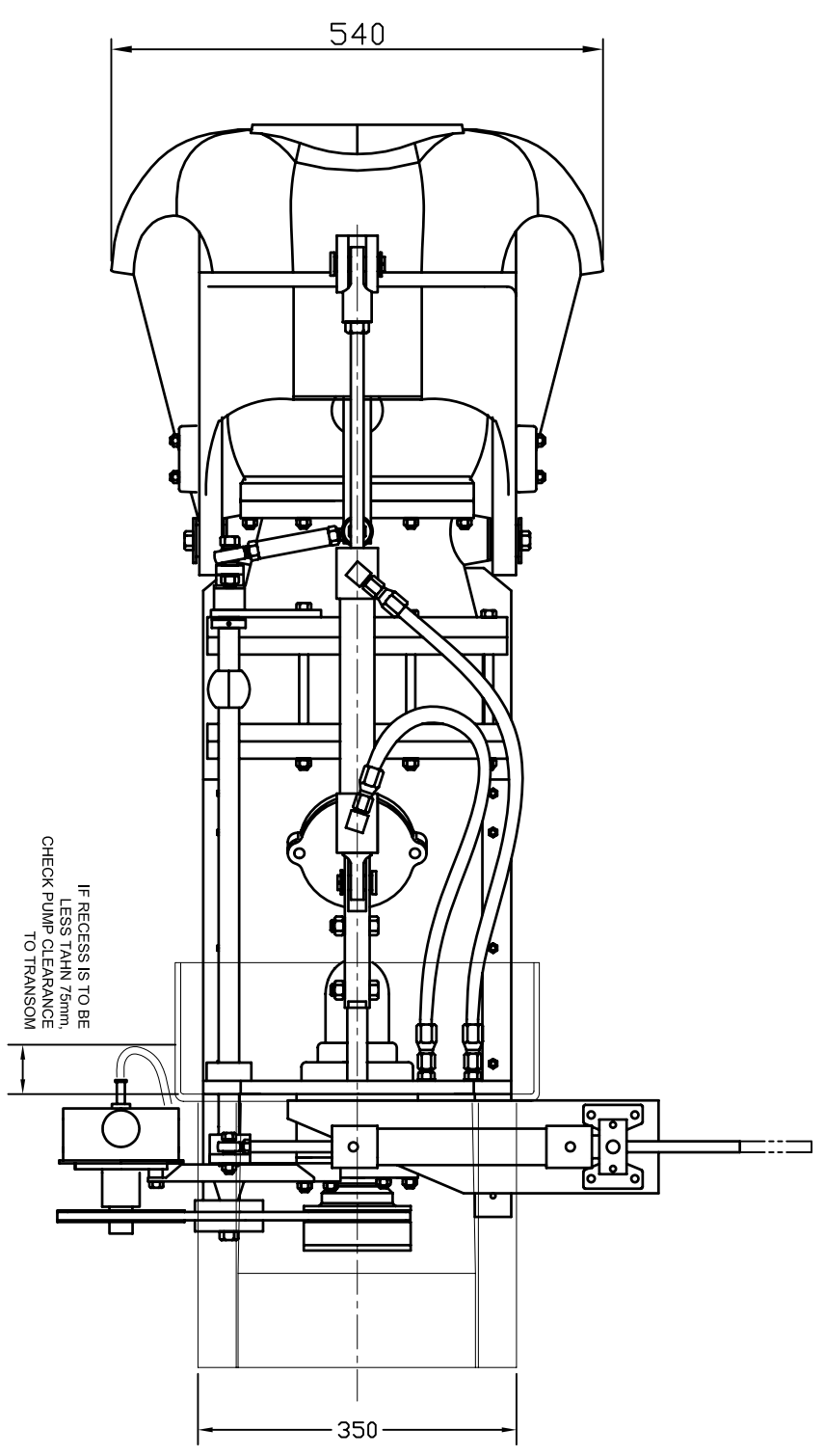


ITEM No.	REVISION	DESCRIPTION	BY	DATE

NOTE: FRP MOULD INSERT SHOWN
 MAX. RECESS = 115mm
 MIN. RECESS = 75mm + TRANSOM THICKNESS

PLEASE NOTE THAT A MINIMUM 'RECESS' OF 75mm IS REQUIRED, AS MEASURED INTERNALLY SO THAT PUMP HOSES ETC. HAVE SUFFICIENT CLEARANCE.

STANDARD MOULD INSERT PROVIDES FOR A MAXIMUM RECESS OF 115mm. SHOULD A RECESS GREATER THAN 115mm BE REQUIRED THE MOULD INSERT HEIGHT WILL NEED TO BE INCREASED TO CLEAR THE REVERSE RAM'S F.W.D. BRACKET



DUE TO OUR POLICY OF CONTINUAL DEVELOPMENT, DRAWINGS SUBJECT TO CHANGE WITHOUT NOTICE.

THIS DRAWING AND THE DESIGN IT COVERS ARE THE PROPERTY OF DOEN PACIFIC P/L. THIS INFORMATION IS PROVIDED ON A RESTRICTED BASIS AND MUST NOT BE DISCLOSED TO A THIRD PARTY OR REPRODUCED IN FULL OR PART IN ANY FORM WITHOUT THE WRITTEN CONSENT OF DOEN PACIFIC P/L.		UNLESS OTHERWISE STATED ALL DIMENSIONS IN MILLIMETRES TOLERANCES LINEAR : ± 0.4 ANGULAR : $\pm 0.5^\circ$		DRAGGING STANDARD AS 1100		FINISH	
DRN P.PEIRIS	CKD T.JUDVARY	APPD T.JUDVARY	ISSUED 7/05/00	MODELS DJ100	TITLE GENERAL ARRANGEMENT		
DOEN PACIFIC PTY. LTD.				SIZE A3	DRG. No.	DJ100 031105	
SCALE NONE AS PRINTED				SCALE NONE AS PRINTED			