



**SEAKEEPER INC.**

+1-410-326-1590 Corporate Headquarters  
+1-240-718-6440


[seakeeper.com](http://seakeeper.com)

©2018 Seakeeper Inc.

**ELIMINATE BOAT ROLL.**



**SEAKEEPER**



**ONCE YOU FEEL IT,  
YOU'LL NEVER BOAT WITHOUT IT.**

Boston Whaler 420 Outrage, equipped with a Seakeeper 6

## **WITH THE PUSH OF A BUTTON**

...your boat transforms from rolling to stable, guests go from sick to smiling, and memories turn from "never again" to "best trip ever."

Other innovative technologies make boating more enjoyable for the captain, but only Seakeeper lights up every face on board. It's magic everyone can feel.

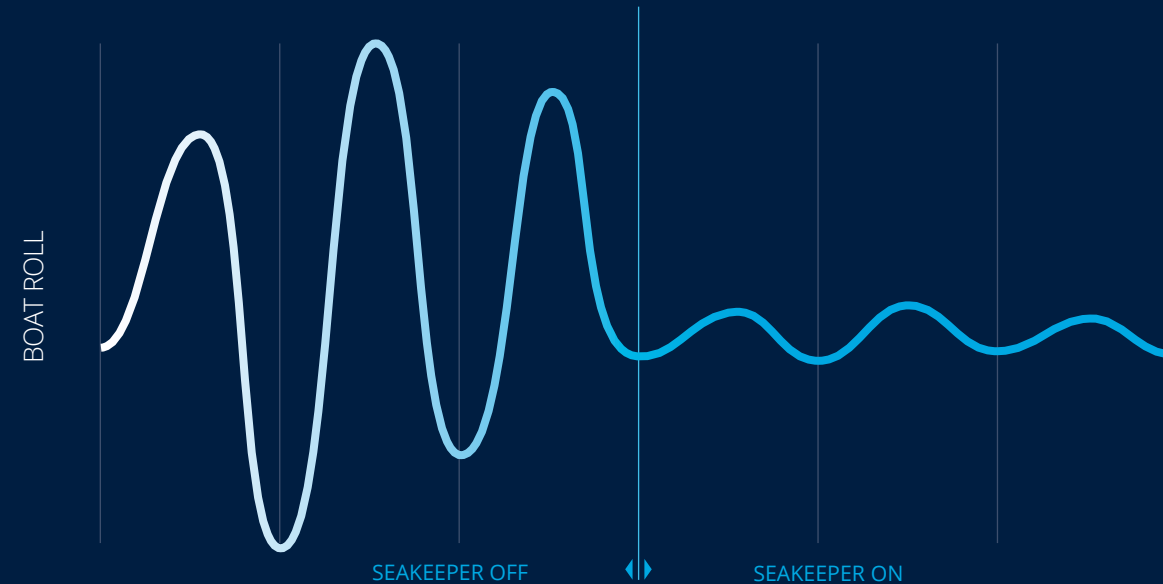
## RELAX ON EVERY EXCURSION

Boating is a passion. It's what we do to have fun. It provides the opportunity to spend quality time with friends and family. Whether cruising the coast in a trawler, fishing from a center console, or simply anchoring in a new harbor, we look forward to enjoying ourselves on our boats.

Seakeeper provides the solution to a host of excuses to stay ashore. No more fear of motion sickness. No more fatigue after only four hours seeking the bite. No more worrying about children or elderly guests on a rolling deck. No more pressure to sell a boat that's going unused. Instead, it's confidence, comfort, safety, and smiles.



## TURN IT ON AND FEEL THE MAGIC



## ONCE A DREAM. NOW A REALITY. STABILIZATION FOR SMALLER BOATS.

Never before has there been a stabilization option for smaller boats. But when customers ask...Seakeeper delivers! For the first time, smaller boats can enjoy the comfort and safety once only available to yachts. Whether you have a 27' center console or a 220' super-yacht, we have a Seakeeper that is right for you.



Visit [Seakeeper.com](http://Seakeeper.com) for installation photos and sea trial results on a wide range of Seakeeper stabilized boats.



Regulator 41 equipped with a Seakeeper 6



## CAN I ADD A SEAKEEPER TO MY BOAT?

In most cases the answer is YES!

As Seakeeper has become a must-have on new builds, it has driven awareness and, in turn, the desire of owners to refit their current boat with the latest and greatest technology in the marine industry. Prior to the introduction of Seakeeper in 2008, the majority of boats had no viable option for stabilization. Fortunately for those boats currently on the water without Seakeeper, most can be refit. We have created a global network of certified refit installers ready to integrate Seakeeper into your existing vessel. Give us a call to transform your boating experience forever!

### OVER 1,000 REFITS TO DATE

Seakeeper's refits cover a broad spectrum of brands and models. In many cases, we can supply a scope of work and an estimated cost immediately.

### FAST INSTALLATION

The average refit installation ranges from 1-3 weeks. For smaller boats, a unique leaning post design enables a refit to be done in a matter of days.

## WE AIM TO ELIMINATE UP TO 95% OF BOAT ROLL ON EVERY INSTALLATION

Making sure you have the highest level of stabilization while out on the water is important to us. That's why we look at every Seakeeper installation individually. We customize our product recommendation based on the parameters of your specific boat. To ensure our high standards have been met, we developed the Seakeeper Mobile App to record sea trials on our installations. This has allowed us to create a database displaying the real-life results of hundreds of installations. View all of our sea trials at [seakeeper.com](http://seakeeper.com).



# BUILT TO PERFORM

The Seakeeper is designed to virtually eliminate boat roll on vessels 27 feet and up. It requires modest electrical power, has no outside appendages, and can be installed virtually anywhere on board. Its computerized control and vacuum technology make it the first truly practical, and only modern, anti-roll gyro.

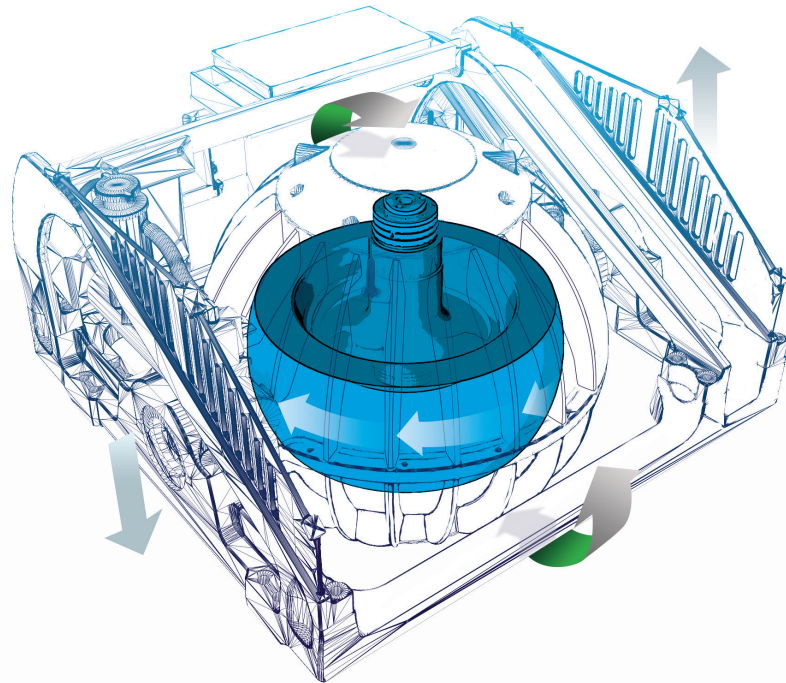


## DASHBOARD DISPLAY

Intuitive operator interface allows you to simply turn it on and forget about it. No complex settings or adjustments for the operator, Seakeeper does all of this automatically, you simply enjoy.

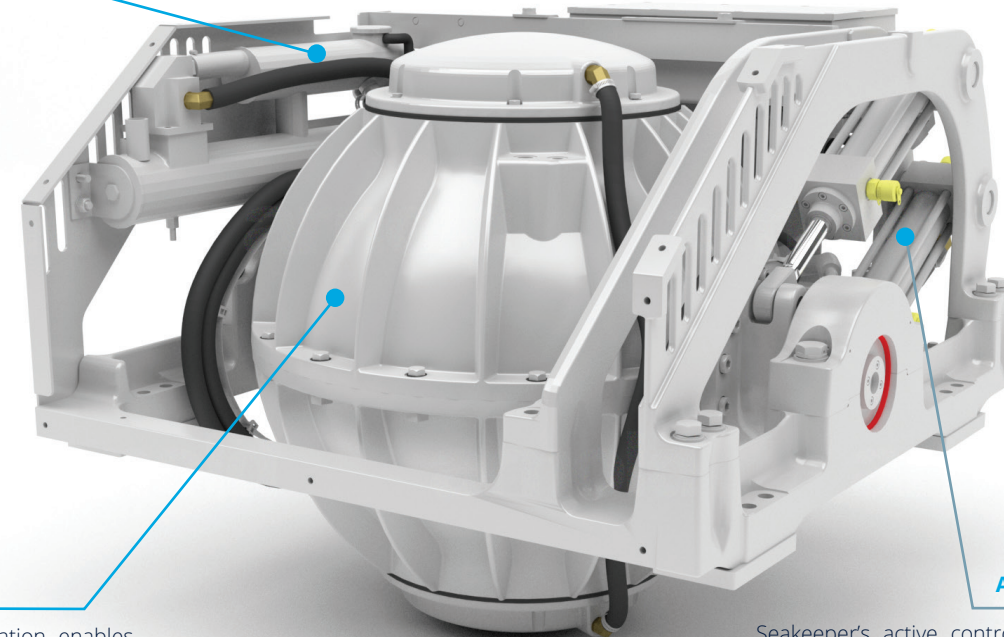
## HOW IT WORKS

Inside a vacuum encapsulation, a flywheel spins at speeds of up to 9,700 rpm. When the boat rolls, the gyro tilts fore and aft (precesses), producing a powerful gyroscopic torque to port and starboard that counteracts the boat roll.



## INNOVATIVE COOLING SYSTEM

Patented cooling system enables the flywheel to spin at high speeds inside of the vacuum containment.



## VACUUM SEALED

Seakeeper's vacuum encapsulation enables the flywheel to spin roughly three times faster, cuts flywheel weight by two-thirds, and halves power requirements. Moreover, because the critical components (flywheel, bearings, and motor) are sealed in a vacuum, they are forever isolated from the marine environment.

## ACTIVE CONTROL

Seakeeper's active control optimizes gyro torque, providing an unsurpassed level of performance. Unlike a passively controlled gyro, which must be turned off in the roughest conditions and/or at higher speeds, the Seakeeper is effective at all speeds and can be used in all sea conditions.

## EXTREMELY SMALL

Shown here to scale is a Seakeeper 3 in a 35-foot Center Console, the Seakeeper **occupies less than 1%** of total available space on board.



## AND JUST IN CASE YOU'RE WONDERING...



### LIGHTWEIGHT

Seakeeper weighs a small fraction of the vessel displacement.



### LOW POWER CONSUMPTION

Due to its vacuum encapsulation, Seakeeper requires minimal power. Select Seakeeper models even run off 12V DC power.



### SIMPLE INSTALLATION

Completely internal, no external appendages.



### FLEXIBLE

It can be installed virtually anywhere on the boat and any combination of units can be used to reach targeted performance.



### 25% OF SALES ARE REFITS

Love your current boat, but hate the roll? Simply add a Seakeeper.



### OPTIMIZED

Seakeeper reviews every unique installation in-depth to ensure you receive the full Seakeeper experience. Seakeeper doesn't aim to simply reduce roll, we aim to eliminate it!



**25% LIGHTER**  
**20% SMALLER**



We've done it again. We took the groundbreaking Seakeeper 3 and made it even smaller. 25% lighter and 20% smaller to be exact. Specially designed for boats in the 27-32 foot range, the Seakeeper 2 eliminates up to 95% of boat roll. Now even more people will be able to enjoy their time out on the water.

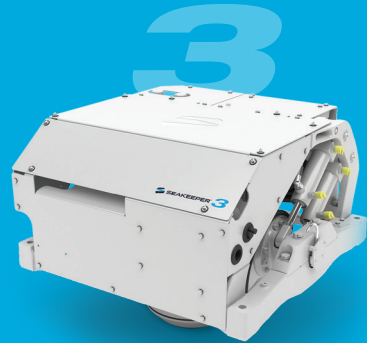


# THE RECREATIONAL LINE

Designed for optimal performance  
in recreational applications.



**FOR BOATS** ~27-32' (up to ~7 tons)  
**WEIGHT** 414 lbs (188 kg)  
**DIMENSIONS** 24.8 L x 25.5 W x 20.0 H (inches)  
0.630 L x 0.648 W x 0.508 H (meters)



**FOR BOATS** ~33-39' (up to ~10 tons)  
**WEIGHT** 550 lbs (249 kg)  
**DIMENSIONS** 26.8 L x 27.0 W x 22.5 H (inches)  
0.681 L x 0.686 W x 0.572 H (meters)



**FOR BOATS** ~40-49' (up to ~20 tons)  
**WEIGHT** 870 lbs (395 kg)  
**DIMENSIONS** 29.8 L x 29.7 W x 24.7 H (inches)  
0.756 L x 0.755 W x 0.626 H (meters)

9



**FOR BOATS** ~50-59' (up to ~30 tons)  
**WEIGHT** 1,210 lbs (550 kg)  
**DIMENSIONS** 33.5 L x 35.6 W x 28.3 H (inches)  
0.852 L x 0.903 W x 0.720 H (meters)

16



**FOR BOATS** ~60-69' (up to ~50 tons)  
**WEIGHT** 2,195 lbs (996 kg)  
**DIMENSIONS** 42.6 L x 43.2 W x 32.8 H (inches)  
1.08 L x 1.1 W x 0.83 H (meters)

26



**FOR BOATS** ~70-84' (up to ~75 tons)  
**WEIGHT** 2,960 lbs (1342 kg)  
**DIMENSIONS** 52.7 L x 55.9 W x 40.4 H (inches)  
1.34 L x 1.42 W x 1.03 H (meters)

35



**FOR BOATS** >85' (up to ~100 tons)  
**WEIGHT** 3,920 lbs (1,778 kg)  
**DIMENSIONS** 54.3 L x 55.9 W x 43.5 H (inches)  
1.38 L x 1.42 W x 1.11 H (meters)

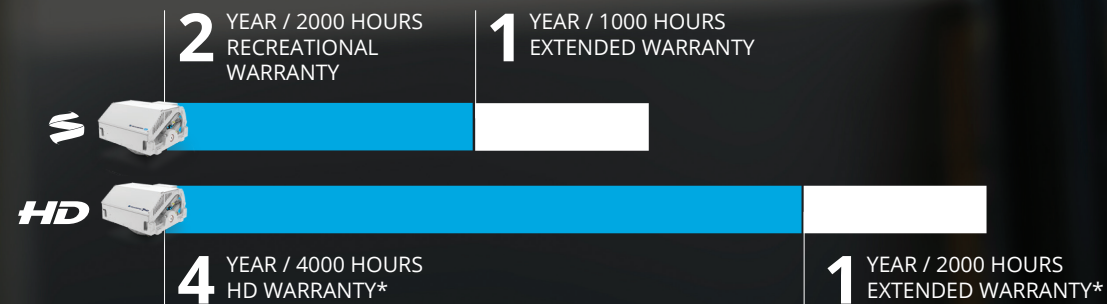
# THE STATS

							
Rated Speed	9,000 RPM	8,450 RPM	9,700 RPM	9,000 RPM	6,130 RPM	5,000 RPM	5,150 RPM
Angular Momentum at Rated RPM	2,000 N-M-S	3,000 N-M-S	6,000 N-M-S	9,000 N-M-S	16,000 N-M-S	26,000 N-M-S	35,000 N-M-S
Max Anti-Rolling Torque at Rated RPM	5,249 N-M	7,854 N-M	15,690 N-M	18,810 N-M	30,720 N-M	56,000 N-M	73,000 N-M
Spool-up Time to Rated RPM	35 minutes (9,000 RPM)	50 minutes (8,450 RPM)	40 minutes (9,700 RPM)	55 minutes (9,000 RPM)	57 minutes (6,130 RPM)	95 minutes (5,000 RPM)	85 minutes (5,150 RPM)
Spool-up Time to Stabilization	24 minutes (7,650 RPM)	36 minutes (7,185 RPM)	24 minutes (7,700 RPM)	38 minutes (7,650 RPM)	45 minutes (5,210 RPM)	70 minutes (4,250 RPM)	45 minutes (4,380 RPM)
Spool-up Power							
AC Input	N/A	N/A	2300 Watts Max	3000 Watts Max	3000 Watts Max	3000 Watts Max	5000 Watts Max
DC Input	850 Watts Max	900 Watts Max	125 Watts	240 Watts	240 Watts	240 Watts	240 Watts
Operating Power							
AC Input (sea state dependent)	N/A	N/A	1050 - 2300 Watts	1500 - 2000 Watts	2300 - 3000 Watts	1000 - 3000 Watts	2000 - 5000 Watts
DC Input	300 - 650 Watts (Sea State Dependent)	400 - 750 Watts (Sea State Dependent)	125 Watts	240 Watts	240 Watts	240 Watts	240 Watts
AC Input Voltage (Single Phase)	N/A	N/A	110 - 230 VAC (+/- 10%), 50/60 Hz	208 - 230 VAC (+/- 10%), 50/60 Hz	208 - 230 VAC (+/- 10%), 50/60 Hz	208 - 230 VAC (+/- 10%), 50/60 Hz	208 - 230 VAC (+/- 10%), 50/60 Hz
DC Input Voltage	12 VDC @ 75 Amps	12 VDC @ 85 Amps	12 VDC @ 15 Amps	24 VDC @ 10 Amps	24 VDC @ 10 Amps	24 VDC @ 10 Amps	24 VDC @ 10 Amps
Weight	414 lbs (188 kg)	550 lbs (249 kg)	870 lbs (395 kg)	1,210 lbs (550 kg)	2,195 lbs (996 kg)	2,960 lbs (1,342 kg)	3,920 lbs (1,778 kg)
Envelope Dimensions	24.8 L x 25.5 W x 20.0 H (inches)	26.8 L x 27.0 W x 22.5 H (inches)	29.77 L x 29.71 W x 24.65 H (inches)	33.5 L x 35.6 W x 28.3 H (inches)	42.6 L x 43.2 W x 32.8 H (inc hes)	52.7 L x 55.9 W x 40.4 H (inches)	54.3 L x 55.9 W x 43.5 H (inches)
	0.630 L x 0.648 W x 0.508 H (meters)	0.681 L x 0.686 W x 0.572 H (meters)	0.756 L x 0.755 W x 0.626 H (meters)	0.852 L x 0.903 W x 0.720 H (meters)	1.08 L x 1.10 W x 0.83 H (meters)	1.34 L x 1.42 W x 1.03 H (meters)	1.38 L x 1.42 W x 1.11 H (meters)
Noise Output	<68 dBC at 1 meter	<68 dBC at 1 meter	70-72 dBC at 1 meter	68-70 dBC at 1 meter	68-73 dBC at 1 meter	72-74 dBC at 1 meter	72-74 dBC at 1 meter



# WARRANTY OPTIONS

We are committed to providing top-notch service and support of our products. That's why we are proud to offer an extended warranty program, enhancing the coverage of our standard factory warranty and providing you with greater peace of mind.



\*ON ALL MAJOR COMPONENTS WITHIN THE SPHERE



# THE *HD* LINE

Heavy Duty. Engineered for extended use in the harsh conditions of offshore operations and backed by a 4 year major component warranty.

## 5<sup>HD</sup>



**FOR BOATS** ~35-44' (up to ~15 tons)

**WEIGHT** 870 lbs (395 kg)

**DIMENSIONS** 29.77 L x 29.71 W x 24.65 H (inches)  
0.756 L x 0.755 W x 0.626 H (meters)

## 7<sup>HD</sup>



**FOR BOATS** ~45-54' (up to ~25 tons)

**WEIGHT** 1,210 lbs (550 kg)

**DIMENSIONS** 33.5 L x 35.6 W x 28.3 H (inches)  
0.852 L x 0.903 W x 0.720 H (meters)

## 12<sup>HD</sup>



**FOR BOATS** ~55-64' (up to ~35 tons)

**WEIGHT** 2,195 lbs (996 kg)

**DIMENSIONS** 42.6 L x 43.2 W x 32.8 H (inches)  
1.08 L x 1.1 W x 0.83 H (meters)

## 20<sup>HD</sup>



**FOR BOATS** ~65-74' (up to ~60 tons)

**WEIGHT** 2,960 lbs (1342 kg)

**DIMENSIONS** 52.7 L x 55.9 W x 40.4 H (inches)  
1.34 L x 1.42 W x 1.03 H (meters)

## 30<sup>HD</sup>



**FOR BOATS** >75' (up to ~85 tons)

**WEIGHT** 3,920 lbs (1,778 kg)

**DIMENSIONS** 54.3 L x 55.9 W x 43.5 H (inches)  
1.38 L x 1.42 W x 1.11 H (meters)



- Seakeeper Office Locations
- Exclusive Distributors
- Dealers

## UNRIVALED SUPPORT

Seakeeper sales, service, and refit centers around the world.



**2-YEAR WARRANTY**  
Parts and labor.  
1 year extended warranty available.



**RELIABLE**  
Simple maintenance.



**TRUSTED**  
The world's top boating brands choose Seakeeper with over 6,000 units in operation globally.



**+1-240-718-6440**  
We stand behind our product with a global support network and a 24/7 technical support hotline.

VISIT [SEAKEEPER.COM](http://SEAKEEPER.COM)  
TO SCHEDULE A DEMO &  
FIND A SALES REP NEAR YOU



# TAKE A RIDE. BE AMAZED.

You can read through sea trial reports and watch footage of the Seakeeper in action, but the only way to truly understand how this revolutionary technology will transform your boating life forever is to take a ride and experience it for yourself!